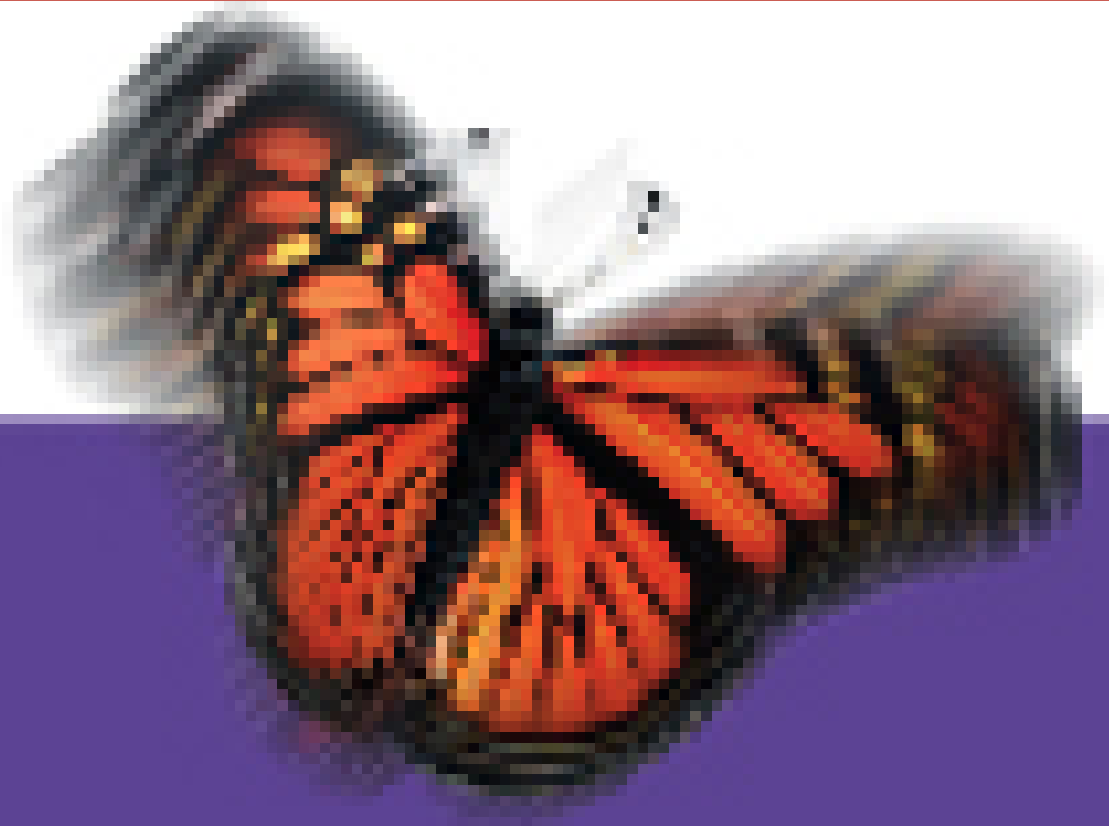


Hello. It looks like you're using an ad blocker that may prevent our website from working properly. To receive the best experience possible, please make sure any blockers are switched off and refresh the page.

If you have any questions or need help you can email us



# MONARCH

## BI Server

# Monarch Professional

Hello. It looks like you're using an ad blocker that may prevent our website from working properly. To receive the best experience possible, please make sure any blockers are switched off and refresh the page.

If you have any questions or need help you can email us

report they save untold hours of manual rekeying of data.

One accountant using Monarch comments, “Monarch really enables a forward-thinking approach to accounting and auditing. It optimizes the in-person time at the client site. That time on site is expensive because it involves travel, lodging and related expenses. The more data-related work we get done before we are at the client site, the more productive we will be.”

Monarch Professional version 11, which became available in July 2011, brings an entire new look and feel to Monarch. With Monarch 11, accountants can extract data from nearly any data source and in almost any format – including semi-structured and loosely structured data – and export it into popular office applications and relational databases. Monarch complements traditional audit software packages, which tend to be database-focused and cannot access some of the data needed.

Monarch 11 also provides a self-service data platform so that accountants can build report models for specific data, and simply run those reports as needed. The alternative to Monarch is to manually rekey data or to resort to expensive, custom report programming from IT. A recent survey by Datawatch showed that most accountants do not have dedicated IT resources for data access and reporting.

Because Monarch accesses and extracts the data directly from source systems, resulting in no one touching the data, it completely eliminates the ‘human error factor.’ As one accountant said, “Monarch gives us reports with a 100% guaranteed accurate dataset.”

A key benefit to using Monarch 11 is the ability to easily consolidate data from multiple systems, such as accounting software, positive pay software, mainframe systems and others, into a single report. Not only does this provide better insight into the data, but it also enables accountants to focus on the data, and not spend valuable time learning how to extract data from multiple systems.

Hello. It looks like you're using an ad blocker that may prevent our website from working properly. To receive the best experience possible, please make sure any blockers are switched off and refresh the page.

If you have any questions or need help you can email us