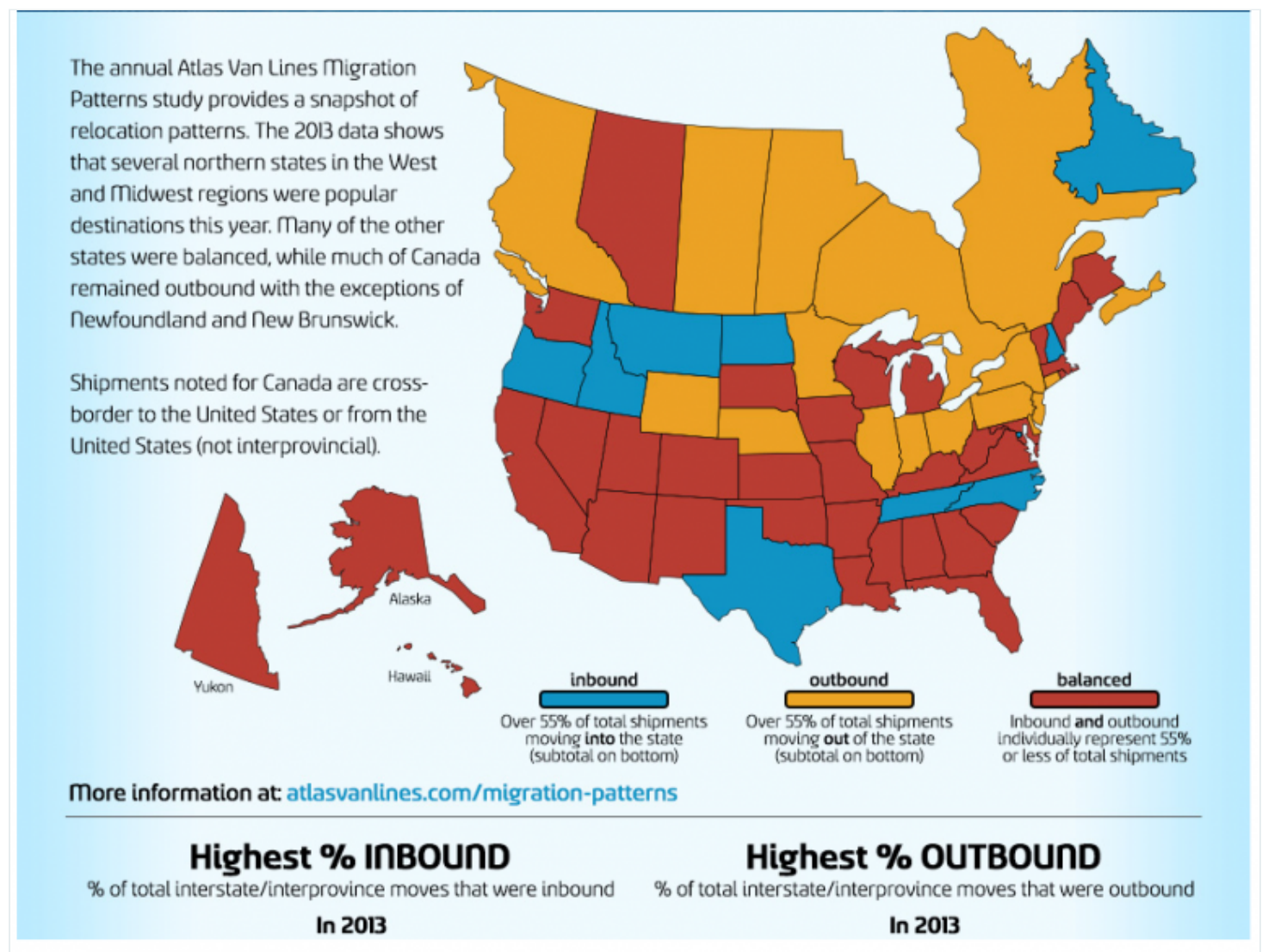


Hello. It looks like you're using an ad blocker that may prevent our website from working properly. To receive the best experience possible, please make sure any blockers are switched off and refresh the page.

If you have any questions or need help you can email us

with the highest population growth, as well as growth resulting from moves. As opposed to organic population growth, which is the result of births to state residents, relocation growth is the result of individuals or families moving from one state to another. And there are definitely trends that stand out.

Jan. 09, 2014



Entrepreneurs considering a new business might take into consideration the states with the highest population growth, as well as growth resulting from moves. As

opposed to organic population growth, which is the result of births to state

Hello. It looks like you're using an ad blocker that may prevent our website from working properly. To receive the best experience possible, please make sure any blockers are switched off and refresh the page.

If you have any questions or need help you can email us

The only states and U.S. territories to see a net decrease in overall population were Maine (dropping by less than one hundredth of a percent, Rhode Island, down 0.1 percent, and Puerto Rico, with a population decrease of 2.97 percent.

Relocation Growth

According to one of the nation's leading household moving companies, more Americans relocated to a new state in 2013. The [2013 Atlas Van Lines Migration Patterns](#) study found the majority of U.S. states achieved a balance between inbound and outbound moves, while the total number of moves increased six percent from 2012. Canada's provinces, however, were more likely to see outbound moves and a net decrease. Atlas started conducting the the annual study in 1993 to track the nation's interstate (between states) moving patterns year to year.

Two states that were outbound in 2012 are now balanced states, Vermont and West Virginia. Formerly inbound states Alaska and Washington also became balanced. After spending 2012 as balanced states, Delaware and Pennsylvania became outbound while Idaho and Montana became inbound.

Similar to last year, the highest number of moves occurred in California, Texas and Florida. California comes in at the top with more than 14,500 moves in 2013, which accounts for 19 percent of total interstate moves. North Dakota had the highest percentage of inbound moves, with 67 percent of all moves being inbound. Connecticut experienced the highest percentage of outbound moves totaling 60 percent while New York was close behind with 59 percent.

“Our annual Migration Pattern study provides invaluable insights that relate not only to our industry, but our nation as a whole,” said Jack Griffin, president and COO of Atlas World Group. “This year's findings show more states are balanced between

arriving and departing residents while increased overall moves could be an indicator

Hello. It looks like you're using an ad blocker that may prevent our website from working properly. To receive the best experience possible, please make sure any blockers are switched off and refresh the page.

If you have any questions or need help you can email us

being outbound states to balanced; and Delaware went from being balanced to outbound. Washington DC remains as the only northern location to be inbound for 11 consecutive years.

Southern States

The Southern states saw no change from 2012 to 2013. The majority of the Southeast and Mid-Atlantic states remain balanced with the exception of Tennessee and North Carolina, which both remain inbound states. All of the Southwest states remain balanced in 2013 excluding inbound Texas.

Midwestern States

Mirroring last year's data, Illinois, Indiana, Ohio, Minnesota and Nebraska remained outbound while Kansas, Missouri, Michigan, Wisconsin and Iowa remained balanced. North Dakota remained inbound. No Midwestern state has been classified as inbound for more than 10 consecutive years.

Western States

The Western states also experienced significant change since 2012, particularly with Montana and Idaho shifting from balanced to inbound states. Additionally, Washington went from inbound to balanced, leaving the majority of the Western Unites States balanced.

Canadian Provinces

Five of the 10 provinces remain outbound – British Columbia, Manitoba, Nova Scotia, Ontario and Saskatchewan. Having moved to inbound in 2012, New Brunswick is back to being balanced. Another noteworthy change is that Quebec went from being balanced to outbound. Two territories – Nunavut and Yukon Territory – are unclassified, while the third territory – Northwest Territory – is outbound.

How status is determined

Hello. It looks like you're using an ad blocker that may prevent our website from working properly. To receive the best experience possible, please make sure any blockers are switched off and refresh the page.

If you have any questions or need help you can email us

each state, visit www.atlasvanlines.com/migration-patterns/. For an infographic on the results, visit www.atlasvanlines.com/infographics/2013-migration-patterns/.

Accounting • Small Business

CPA Practice Advisor is registered with the National Association of State Boards of Accountancy (NASBA) as a sponsor of continuing professional education on the National Registry of CPE Sponsors.

© 2024 Firmworks, LLC. All rights reserved